

Project Profile



The Ritz-Carlton-Amelia Island, FL

Subsurface Stormwater ManagementSM



PROJECT SUMMARY

The Ritz-Carlton located directly on the beach in Amelia Island, FL, utilizes the StormTech system for subsurface stormwater storage. In 2008, an extensive ballroom expansion began, ultimately adding 11,000 square feet of additional meeting space. Because land is scarce and valuable near the coast, the Ritz-Carlton used existing land on their property for the new ballroom and associated parking lot. The new parking lot was constructed without compromising valuable space for an above ground stormwater pond. StormTech is a cost effective solution that benefits developers, engineers, and contractors, ultimately conserving land and allowing for increased design options.

The StormTech detention/retention system was constructed with 736 SC-740 to provide over 55,000 cubic feet of storage volume, designed to meet regulatory requirements. Like most StormTech systems, it is located beneath the parking lot, allowing the parcel to meet its maximum design potential without requiring additional land.

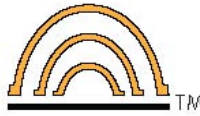
The design incorporated the **patented Isolator Row System** which provides TSS separation and extended maintenance intervals that protect the system and assures performance. The StormTech Chambers are designed in accordance with **AASHTO LRFD Section 12.12 and ASTM F2418 Industry Standards**, therefore providing safety factors and superior structural integrity.

The installing contractor was DNS Contracting. Dunn and Associates, Inc. of Jacksonville, FL is the civil engineer design firm of record.

For additional details about this project or your specific application, call 1-888-892-2694 for your local StormTech Regional Product Manager.



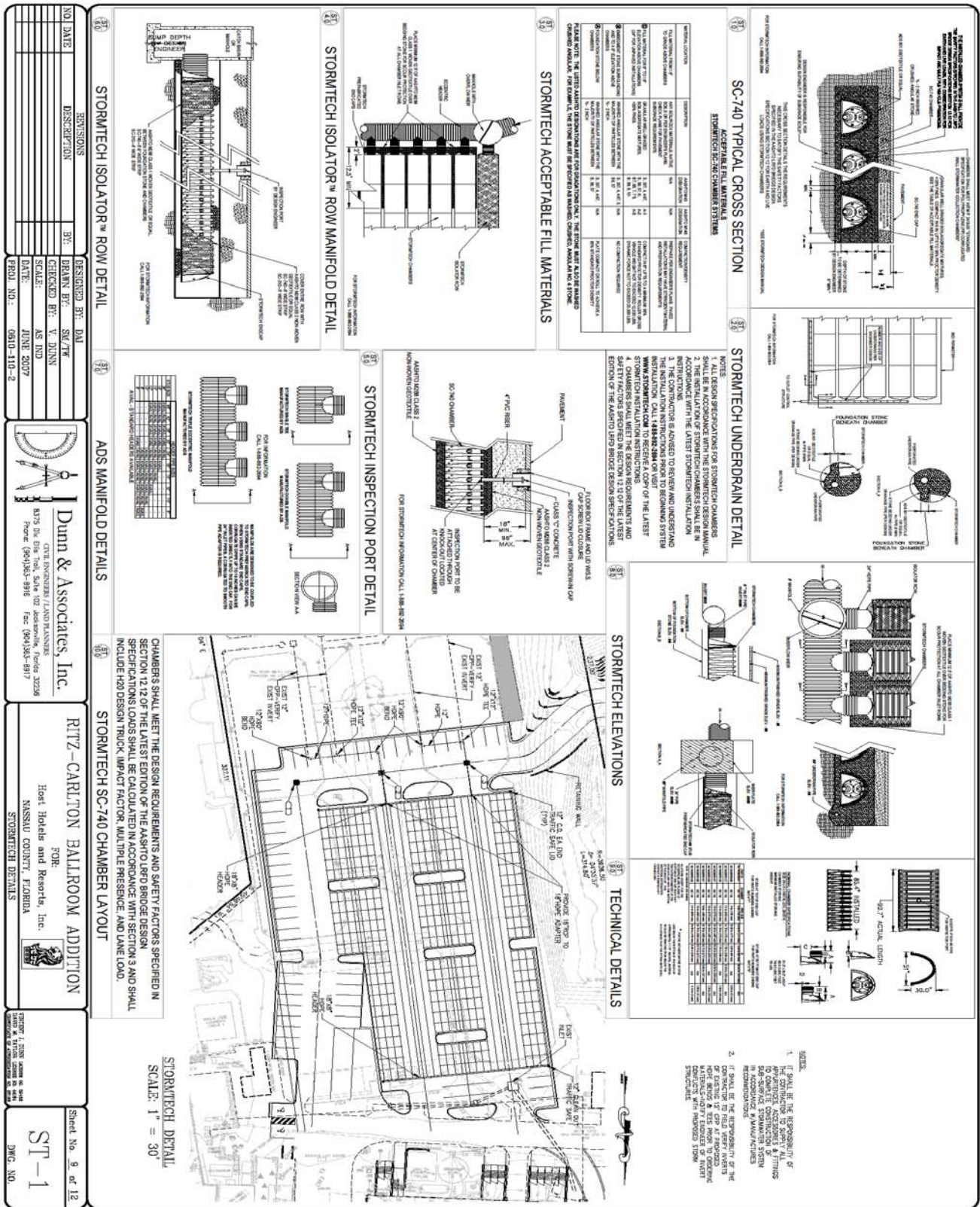
Project Profile



StormTech®

Detention • Retention • Recharge

Subsurface Stormwater ManagementSM



REVISIONS

NO.	DATE	DESCRIPTION	BY:	DESIGNED BY:	CHK'D BY:

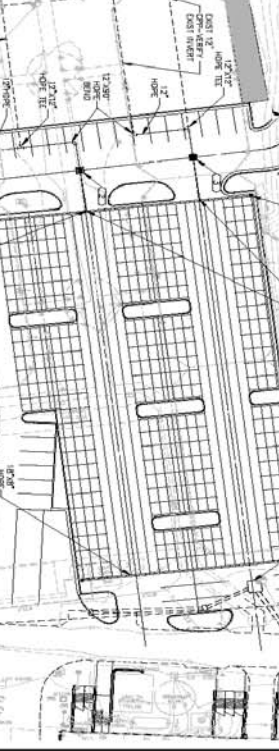
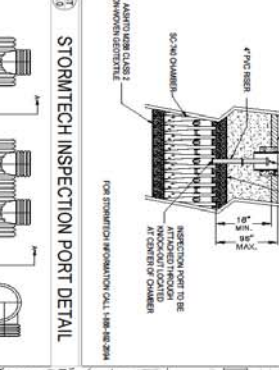
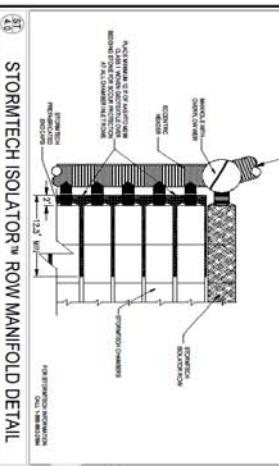
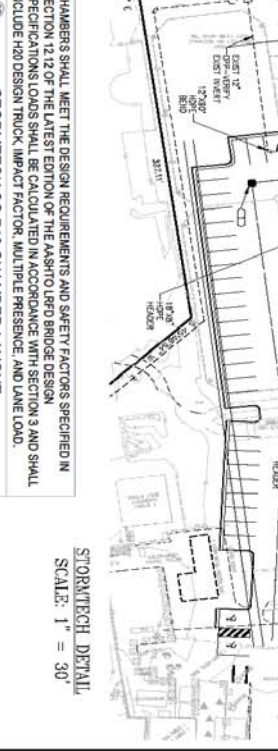
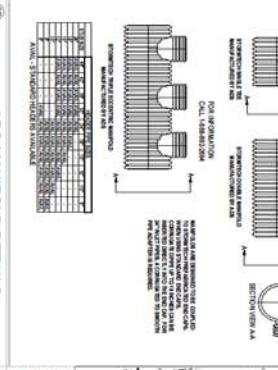
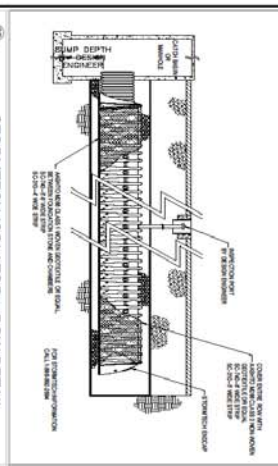
DESIGNED BY: PAJ

CHECKED BY: Y. DUNN	DATE: JUNE 2007
SCALE: AS SHOWN	PROJECT NO.: 0510-110-2

Dunn & Associates, Inc.
 CIVIL ENGINEERS / LAND SURVEYORS
 2575 BRIDGE PL. SUITE 200
 WILMINGTON, MASSACHUSETTS 01897
 TEL: (978) 945-5918 FAX: (978) 945-8917

RITZ-CARLTON BALLROOM ADDITION
 FOR: **Host Hotels and Resorts, Inc.**
 MASSACHUSETTS, FLORIDA
 STORMTECH DETAILS

Sheet No. 9 of 12
ST-1
 DWG. NO.



SC-740 TYPICAL CROSS SECTION

STORMTECH ISOLATOR MANIFOLD

ITEM	DESCRIPTION	QUANTITY	UNIT	REMARKS
1	STORMTECH ISOLATOR MANIFOLD	1	EA	
2	STORMTECH ISOLATOR MANIFOLD	1	EA	
3	STORMTECH ISOLATOR MANIFOLD	1	EA	
4	STORMTECH ISOLATOR MANIFOLD	1	EA	
5	STORMTECH ISOLATOR MANIFOLD	1	EA	
6	STORMTECH ISOLATOR MANIFOLD	1	EA	
7	STORMTECH ISOLATOR MANIFOLD	1	EA	
8	STORMTECH ISOLATOR MANIFOLD	1	EA	
9	STORMTECH ISOLATOR MANIFOLD	1	EA	
10	STORMTECH ISOLATOR MANIFOLD	1	EA	
11	STORMTECH ISOLATOR MANIFOLD	1	EA	
12	STORMTECH ISOLATOR MANIFOLD	1	EA	
13	STORMTECH ISOLATOR MANIFOLD	1	EA	
14	STORMTECH ISOLATOR MANIFOLD	1	EA	
15	STORMTECH ISOLATOR MANIFOLD	1	EA	
16	STORMTECH ISOLATOR MANIFOLD	1	EA	
17	STORMTECH ISOLATOR MANIFOLD	1	EA	
18	STORMTECH ISOLATOR MANIFOLD	1	EA	
19	STORMTECH ISOLATOR MANIFOLD	1	EA	
20	STORMTECH ISOLATOR MANIFOLD	1	EA	
21	STORMTECH ISOLATOR MANIFOLD	1	EA	
22	STORMTECH ISOLATOR MANIFOLD	1	EA	
23	STORMTECH ISOLATOR MANIFOLD	1	EA	
24	STORMTECH ISOLATOR MANIFOLD	1	EA	
25	STORMTECH ISOLATOR MANIFOLD	1	EA	
26	STORMTECH ISOLATOR MANIFOLD	1	EA	
27	STORMTECH ISOLATOR MANIFOLD	1	EA	
28	STORMTECH ISOLATOR MANIFOLD	1	EA	
29	STORMTECH ISOLATOR MANIFOLD	1	EA	
30	STORMTECH ISOLATOR MANIFOLD	1	EA	

STORMTECH UNDERDRAIN DETAIL

1. ALL DESIGN SPECIFICATIONS FOR STORMTECH CHAMBERS SHALL BE IN ACCORDANCE WITH THE STORMTECH DESIGN MANUAL.

2. THE INSTALLATION OF STORMTECH CHAMBERS SHALL BE IN ACCORDANCE WITH THE LATEST STORMTECH INSTALLATION INSTRUCTIONS.

3. THE CONTRACTOR IS ADVISED TO REVIEW AND UNDERSTAND THE STORMTECH DESIGN MANUAL AND UNDERSTAND THE STORMTECH INSTALLATION INSTRUCTIONS.

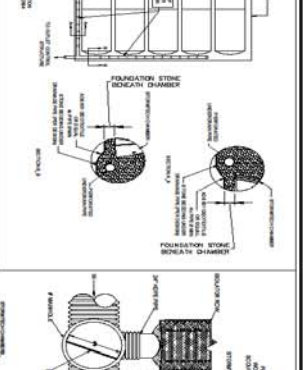
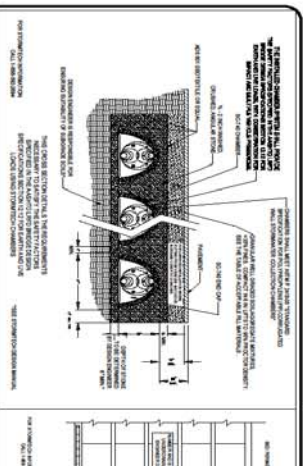
4. THE CONTRACTOR IS ADVISED TO CONTACT STORMTECH FOR TECHNICAL SUPPORT AND TO OBTAIN THE LATEST STORMTECH DESIGN MANUAL AND STORMTECH INSTALLATION INSTRUCTIONS.

5. THE CONTRACTOR IS ADVISED TO CONTACT STORMTECH FOR TECHNICAL SUPPORT AND TO OBTAIN THE LATEST STORMTECH DESIGN MANUAL AND STORMTECH INSTALLATION INSTRUCTIONS.

6. THE CONTRACTOR IS ADVISED TO CONTACT STORMTECH FOR TECHNICAL SUPPORT AND TO OBTAIN THE LATEST STORMTECH DESIGN MANUAL AND STORMTECH INSTALLATION INSTRUCTIONS.

TECHNICAL DETAILS

ITEM	DESCRIPTION	QUANTITY	UNIT	REMARKS
1	STORMTECH ISOLATOR MANIFOLD	1	EA	
2	STORMTECH ISOLATOR MANIFOLD	1	EA	
3	STORMTECH ISOLATOR MANIFOLD	1	EA	
4	STORMTECH ISOLATOR MANIFOLD	1	EA	
5	STORMTECH ISOLATOR MANIFOLD	1	EA	
6	STORMTECH ISOLATOR MANIFOLD	1	EA	
7	STORMTECH ISOLATOR MANIFOLD	1	EA	
8	STORMTECH ISOLATOR MANIFOLD	1	EA	
9	STORMTECH ISOLATOR MANIFOLD	1	EA	
10	STORMTECH ISOLATOR MANIFOLD	1	EA	
11	STORMTECH ISOLATOR MANIFOLD	1	EA	
12	STORMTECH ISOLATOR MANIFOLD	1	EA	
13	STORMTECH ISOLATOR MANIFOLD	1	EA	
14	STORMTECH ISOLATOR MANIFOLD	1	EA	
15	STORMTECH ISOLATOR MANIFOLD	1	EA	
16	STORMTECH ISOLATOR MANIFOLD	1	EA	
17	STORMTECH ISOLATOR MANIFOLD	1	EA	
18	STORMTECH ISOLATOR MANIFOLD	1	EA	
19	STORMTECH ISOLATOR MANIFOLD	1	EA	
20	STORMTECH ISOLATOR MANIFOLD	1	EA	
21	STORMTECH ISOLATOR MANIFOLD	1	EA	
22	STORMTECH ISOLATOR MANIFOLD	1	EA	
23	STORMTECH ISOLATOR MANIFOLD	1	EA	
24	STORMTECH ISOLATOR MANIFOLD	1	EA	
25	STORMTECH ISOLATOR MANIFOLD	1	EA	
26	STORMTECH ISOLATOR MANIFOLD	1	EA	
27	STORMTECH ISOLATOR MANIFOLD	1	EA	
28	STORMTECH ISOLATOR MANIFOLD	1	EA	
29	STORMTECH ISOLATOR MANIFOLD	1	EA	
30	STORMTECH ISOLATOR MANIFOLD	1	EA	



STORMTECH CHAMBERS

1. ALL DESIGN SPECIFICATIONS FOR STORMTECH CHAMBERS SHALL BE IN ACCORDANCE WITH THE STORMTECH DESIGN MANUAL.

2. THE INSTALLATION OF STORMTECH CHAMBERS SHALL BE IN ACCORDANCE WITH THE LATEST STORMTECH INSTALLATION INSTRUCTIONS.

3. THE CONTRACTOR IS ADVISED TO REVIEW AND UNDERSTAND THE STORMTECH DESIGN MANUAL AND UNDERSTAND THE STORMTECH INSTALLATION INSTRUCTIONS.

4. THE CONTRACTOR IS ADVISED TO CONTACT STORMTECH FOR TECHNICAL SUPPORT AND TO OBTAIN THE LATEST STORMTECH DESIGN MANUAL AND STORMTECH INSTALLATION INSTRUCTIONS.

5. THE CONTRACTOR IS ADVISED TO CONTACT STORMTECH FOR TECHNICAL SUPPORT AND TO OBTAIN THE LATEST STORMTECH DESIGN MANUAL AND STORMTECH INSTALLATION INSTRUCTIONS.

6. THE CONTRACTOR IS ADVISED TO CONTACT STORMTECH FOR TECHNICAL SUPPORT AND TO OBTAIN THE LATEST STORMTECH DESIGN MANUAL AND STORMTECH INSTALLATION INSTRUCTIONS.